

# TEST REPORT

**Applicant** : **Jiujiang Shuoda precision Hardware Co., LTD**  
**Address** : East of Industrial Avenue, North of Duck and Duck Industry Innovation Base, Gongqingcheng Industrial District, Jiujiang City, Jiangxi Province (inside Tang Ren Clothing Co., LTD.)

**Report on the submitted sample said to be**

**Sample name** : **Scent Stick**  
**Model** : 35X6  
**Trade Mark** : N/A  
**Manufacture** : **Jiujiang Shuoda precision Hardware Co., LTD**  
**Address** : East of Industrial Avenue, North of Duck and Duck Industry Innovation Base, Gongqingcheng Industrial District, Jiujiang City, Jiangxi Province (inside Tang Ren Clothing Co., LTD.)

**Testing laboratory** : **Shenzhen Huaxiang Testing Co., Ltd**  
 Building B2, Junfeng Zhongcheng Intelligent Manufacturing Innovation  
**Test address** : Park, Heping Community, Fuhai Street, Bao'an District, Shenzhen City, Guangdong Province

**Received date** : Feb.17, 2025  
**Testing period** : Feb.17, 2025- Feb.25, 2025

Test Requested		Conclusion
- Regulation (EC) No. 1935/2004, Regulation (EU) No. 10/2011 and (EU) No 2020/1245 on material and articles intended to come into contact with food.		
1	Sensorial examination odour and taste test	Pass
2	Over all Migration	Pass
3	Specific Migration of Heavy metals	Pass
4	Specific Migration of Primary Aromatic Amine	Pass
5	-Specific migration of Formaldehyde	Pass
6	Pentachlorophenol content (PCP)	Pass

Signed for and on behalf of

Lab Manager : **Amy Jiang**

Feb.25, 2025

Date of issue



**Test Part Description**

Specimen No.	Description.
01	Fiber cotton

**Test Result:**
**1. Sensorial examination odour and taste test.**

Test Method: With reference to DIN 10955:2004

Test media: Deionized Water

Test Item(s).	Limit.	Result	Conclusion
		01	
Sensorial examination odour (Point scale)	3	1.1	Pass
Sensorial examination taste (Point scale)	3	1.1	Pass

**Note:**

Scale evaluation:

- 0: No perceptible odour
- 1: Odour just perceptible (still difficult to define)
- 2: Moderate odour
- 3: Moderately strong odour
- 4: Strong odour

**2. Overall Migration Test for Plastic Materials in Contact with Foodstuffs**

**Test Method:** With reference to Commission Regulation (EU)No 10/2011 of 14January 2011 Annex III and Annex V for selection of condition and EN1186-1:2022 for selection of simulants by total immersion method; or EN 1186-3:2022 aqueous food simulants by total immersion methods; or EN 1186-9:2002 aqueous food simulants by article filling methods.

**Test Condition:** 40°C, 2hours

Test Solution	MDL (mg/dm <sup>2</sup> )	Result	Limit (mg/dm <sup>2</sup> )
		01	
Over all Migration in 10% ethanol	3	<5	10
Over all Migration in 20% ethanol	3	<5	10
Over all Migration in 3% acetic acid	3	<5	10
Over all Migration in 50% ethanol	3	<5	10
Over all Migration in rectified olive oil or substitute of rectified olive oil	3	<5	10
Over all Migration in substitute simulant (95%ethanol and iso-octane)	3	<5	10

**Note:**

- “<”=less than
- mg/dm<sup>2</sup>=milligram per square decimeter

### 3. Specific Migration of Heavy Metals

**Test Method:** EN 13130-1: 2004 and analysis by Inductively Coupled Argon Plasma Spectrometer (ICP).

**Test Condition:** 3% acetic acid, 40°C, 2hours

Element	MDL	Unit	Results			Limit (mg/kg)
			01			
			1 <sup>st</sup>	2 <sup>nd</sup>	3 <sup>rd</sup>	
Barium (Ba)	0.1	mg/kg	N.D.	N.D.	N.D.	1
Cobalt (Co)	0.01	mg/kg	N.D.	N.D.	N.D.	0.05
Copper (Cu)	0.5	mg/kg	N.D.	N.D.	N.D.	5
Iron (Fe)	1.0	mg/kg	N.D.	N.D.	N.D.	48
Lithium (Li) (M)	0.1	mg/kg	N.D.	N.D.	N.D.	0.6
Manganese (Mn)	0.1	mg/kg	N.D.	N.D.	N.D.	0.6
Zinc (Zn)	1.0	mg/kg	N.D.	N.D.	N.D.	5*
Aluminum (Al)	0.1	mg/kg	N.D.	N.D.	N.D.	1*
Nickel (Ni)	0.01	mg/kg	N.D.	N.D.	N.D.	0.02
lead (Pb)	0.01	mg/kg	N.D.	N.D.	N.D.	0.1
Cadmium (Cd)	0.002	mg/kg	N.D.	N.D.	N.D.	0.002
Arsenic (As)	0.01	mg/kg	N.D.	N.D.	N.D.	0.01
Mercury (Hg)	0.01	mg/kg	N.D.	N.D.	N.D.	0.01
Chromium (Cr)	0.01	mg/kg	N.D.	N.D.	N.D.	0.01
Antimony (Sb)	0.01	mg/kg	N.D.	N.D.	N.D.	0.04
Lanthanum (La)	0.01	mg/kg	N.D.	N.D.	N.D.	0.05
Europium (Eu)	0.01	mg/kg	N.D.	N.D.	N.D.	0.05
Gadolinium (Gd)	0.01	mg/kg	N.D.	N.D.	N.D.	0.05
Terbium (Tb)	0.01	mg/kg	N.D.	N.D.	N.D.	0.05
Sum of all lanthanide substances (Eu+Gd+La+Tb)	-	mg/kg	N.D.	N.D.	N.D.	0.05

Note:

- The migration test is carried out according to EC Regulation No.10/2011 and the corresponding regulatory statutes.

#### 4. Specific Migration of Primary Aromatic Amine for plastic in Contact with Foodstuffs

**Test Method:** EN 13130-1: 2004 and analysis by Liquid chromatography-mass spectrometry (LC-MS/MS).

**Test Condition:** 3% acetic acid, 40°C, 2hours

Item	MDL	Unit	Results	Limit (mg/kg)
			01	
Primary Aromatic Amine	0.01	mg/kg	<0.01	0.01

Note:

- “<”=less than
- mg/kg=milligram per kilogram

#### 5. Specific migration of Formaldehyde

Method: With reference to CEN/TS 13130-23:2005, analyzed by Ultraviolet visible Spectroscopy

(UV-Vis). Test Condition: 100°C 4Hour

Item	Unit	Result	Limit	Conclusion
		01		
3% Acetic acid(w/v)	mg/kg	N.D.	15	Pass

**Note:** 1. mg/kg = milligrams of the constituents released per kilogram of foodstuff.

2. The requirement in accordance with the Commission Regulation (EU) No 10/2011.

#### 6. Pentachlorophenol( PCP )-AP(2004)2 on material and articles intended to come into contact with food.

Method : AP(2004)2, analyzed by Gas Chromatography-mass Spectrometer ( Gc-ms )

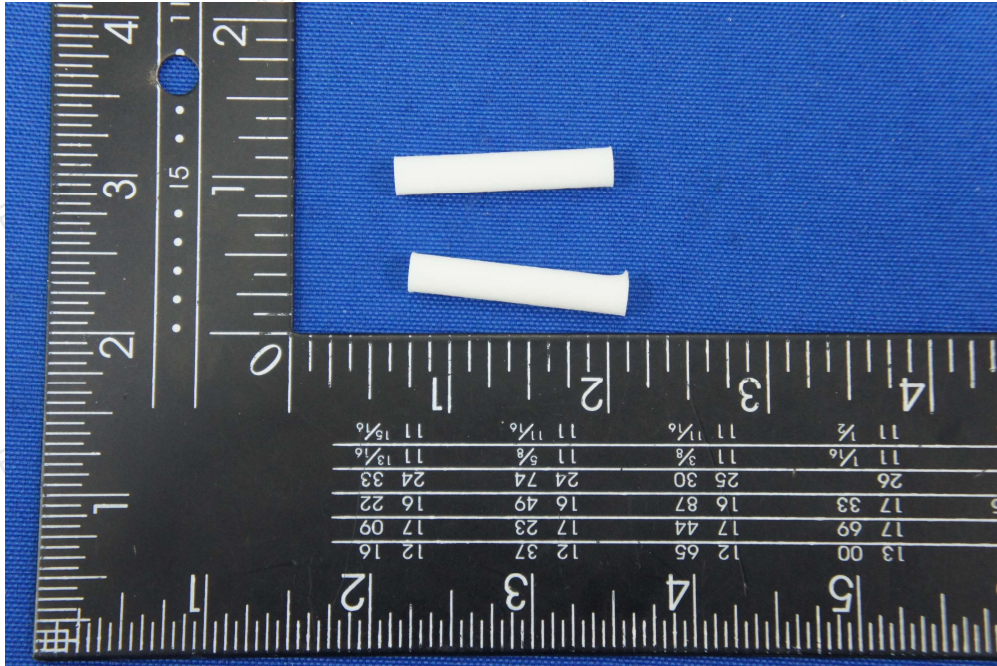
Substances	Pentachlorophenol ( PCP )Location	Conclusion
CAS No	87-86-1	
Reporting Limit (mg/kg)	0.1	
Limit (mg/kg)	0.15	
Material No	Result(mg/kg)	
01	N.D.	PASS

Note:

1. mg/kg = milligram per kilogram (ppm).
2. N.D.=Not Detected(Less than Reporting Limit)

Picture of sample

Photo 1



\*\*\*\* THE END OF REPORT \*\*\*\*